



STOWE HOUSE

Volunteer's Newsletter

April 2016

Introduction

The Wallace Collection, what an interesting day! A short drive from Brackley to Banbury, then by train to Marylebone station, tube or walk, that was the question. Luckily it was a nice sunny day so I trotted down Baker St, although a little disappointed that Sherlock was nowhere to be seen. I was impressed by the Wallace Collection not just the items on display but the building and the attention to detail though out the exhibits, and the staff. That is until I tried a coffee, I have three rules when it comes to black coffee, you should not be able to see the bottom of the cup, and it should taste of coffee and should be hot. Well, the Wallace Collection failed on all points, so I sent it back to be replaced by a slightly better coffee.

It was wonderful to see the Stowe items in the collection, imaging how Stowe would have looked in its prime. But for me the highlight was seeing at least 2 genuine Canalettos, I am a great admirer of his work to actual see two of his painting made my day, year etc.



Found a nice pub on the way back to Marylebone and then home. What a perfect day, in good company. Thank you all for attending.

Did you know that Marylebone Station was name after Mary Le Bone who kept a house of easy virtue on the site of the station?

Wine and Wisdom Quiz

We will be holding a Quiz on Tuesday 31st of May at 6.30pm in the Music Room. Both wine and soft drinks will be provided, but would suggest that you bring your own nibbles. You will also need to bring your own wisdom. This will be open to you and one guest, it our intention to have has many teams of six as we can. Sign-up sheets are in both kitchens, please add your name(s) to one of the teams. Looking forward to see you all.

It's also good bye to Natalie, we will miss you. Enjoy your future the in the world of Roald Dahl and all his wonderful creations. Please pass on any free Wonka Bars to Stowe, especially if the golden ticket is inside.

Stephen
Volunteer Social Organiser

Visitor Services

Capability Brown 300

To celebrate the 300 anniversary of Capability Brown birthday, SHPT and the NT are laying on a number of events. For details of all events see <http://www.nationaltrust.org.uk/stowe/whats-on>

Monday 20th Jun @ 0630pm-0900pm. Duchess of Rutland on "Capability Brown at Belvoir Castle"

Friday 24th June @ 0630pm-0900pm. Johnathan Denby on "Brown the Misogynist"

Thursday 7th July @ 06.30pm-0900pm. Dr Sarah Rutherford on "Brown found: capturing the man on the page"

Thursday 15th Sept @ 11.00am – 0100pm. Richard Wheeler "Step into Brown's World". Join Richard on a walk around Brown's Stowe, and enjoy a picnic in C and V.

Wed 5th Oct @ 10.00am -12.00am or 01.00pm- 03.00pm. Sue Pownall "Sketching Browns views at Stowe" your chance to sketch Stowe.

For more details and cost see Stowe what's on web site (as above), or ring 0844 249 1895, to book

To obtain your volunteer's discount please quote:-

CLFS15 for Talks

CFW01 for walks

For more detail of the CB300 program see,
<http://www.capabilitybrown.org/>

As we receive more information I will forward it to you all.



Ruth Peters
Visitor Services Manager

Community and Learning

Goodbye from me...

I thought I'd use my last contribution to the newsletter to say goodbye to you all! It's been great to be at Stowe and with the fabulous team of volunteers at such an exciting time. I've loved being part of the amazing transformation that the Enlightenment for All projects has brought and I'm really proud of all that we've achieved together. I know that the House will continue to go from strength to strength as more and more visitors get to know what a wonderful experience they can have here!

Do come and visit me in Great Missenden. I've just got the small matter of Roald Dahl's centenary to work on once I start...

Many thanks for everything!

Natalie Wallace
Community & Learning Manager

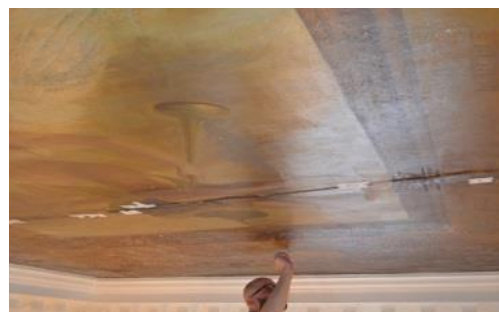
House Custodian News

As the restoration of Sleter's Fame and Victory ceiling begins, I thought I'd let you know the schedule.

Last week the conservators (Hirst Conservation) undertook a UV survey of the ceiling to determine its historical layers, including any conservation done in the 1960s/70s (who undertook the restoration of the Music Room and Queens Temple). This work is visible as the paints they used have not worn at the same rate as the original painting. We await the full results but so far it has thrown up some interesting issues!

This week, they are assessing the state of the painting, where the most damage is and what has caused it. Investigations show that the line running the width of the painting is where, in the past, a whole line of plaster has slipped down a few centimetres but not actually fallen off. The whole painting will then be faced with material such as linen to protect it while they undertake the plaster repairs in the ceiling above (on Temple Top Main, a 6th form dorm). We are hoping that the plaster repairs and painting assessment will not reveal too much that we weren't prepared for! This will be finished at the end of the Easter holidays.

In the middle of May, the team will return to start the restoration of the painting, based on the UV survey and plaster repairs. This is due to finish at the end of June, but knowing past form of Stowe restoration, something will turn up that we hadn't expected! I hope that the post-restoration report



will tell us more about Sleter's style of painting, so we can compare this work with the ceiling of the Dining Room when we come to restore this room.
Watch this space!

Anna McEvoy
House Custodian

Tours and Events

Saturday 7th May 2016, **N.T. Coffee Morning** in the Bennett Room, New Inn at 10.00am

Friday 13th May 2016, **Coffee Morning** in the Music Room at 09.45am for 10.00am. Speaker: - John Walton.

Tuesday 31st May 2016, **Wine and Wisdom Quiz**, see notice board for details

Friday 3rd June 2013, at 10.30am **Coffee Morning**, at Concorde and Victory for refreshments followed by a tour of Capability Browns Stowe,

