

SIXTH FORM ENTRY



Stone



The Sixth Form at Stowe

It is an exciting time to be joining Stowe in the Sixth Form. Your A Level years are potentially the most rewarding of your school career, and we want all our Sixth Form pupils to make the most of the opportunities available at Stowe and to enjoy the education and environment that we offer here.

The Sixth Form is an important time, in these two years you will make decisions about Higher Education and your careers. You will be offered all kinds of challenges and opportunities.

In the classroom, we ask that our pupils take a positive approach to learning from the outset, with an understanding that talent in any field is something that is grown through practice. Academic study is, of course, the main reason why you will be at school and Stowe's focus on delivering the best teaching and learning environment means that our support system here has been developed to help you achieve the best results you can.

In addition to the A Level programme, we also offer an Extended Project Qualification which provides the perfect opportunity for you to identify and explore a topic of your choice, demonstrating your ability to work independently which will stand you in good stead for university.

The Sixth Form at Stowe requires a maturity and an ability to organise yourself in a way that develops independent study. You will experience the pleasure of discovery and exploration, of forging ideas and increasing awareness and of deepening your understanding of the world around you, learning personal responsibility and self-motivation as you progress. 98% of Stoics go on to Higher Education each year, so you can see that Stowe's A Level provision is very good indeed.

Life at Stowe School

We ask all our pupils to make the most of the community at Stowe, to think about others, and to contribute to the School. Stowe has so much to offer – we are looking for candidates who will take every opportunity and make the most of each day. There are countless extra-curricular activities on offer and academic stretch can be found through an extremely active offer of academic societies.

Due to unprecedented demand Stowe has expanded its Sixth Form provision by opening West House to accommodate pupils wishing to take advantage of Stowe's outstanding facilities and academic excellence. Like all Stoics, Sixth Formers in West have the benefit of our House system to support them; each Stoic will also have a personal Sixth Form Tutor and will be able to take part in everything Stowe has to offer, including our outstanding sport and extra-curricular activities.

How to apply

Enrolment Forms for the Entry Day need to be completed and submitted by mid-October. You will find some important dates at the back of this brochure. Our Sixth Form Entry Day takes place in November each year, when candidates come to Stowe to sit our Entry Papers – those candidates applying for a scholarship will also be assessed during this Entry Day.

Entry Requirements

Candidates are required to pass our Entry Papers and achieve at least six Bs (or the points equivalent) at GCSE. The following pages describe each scholarship and our entry criteria for each award, please read these carefully if you are considering applying for a scholarship award as we will only proceed with the applications that meet the criteria.

Stowe has so much to **offer** – we are looking for candidates who will take every **opportunity** and make the **most** of each day





A Stowe Scholarship is to be treasured

A limited number of **scholarships**
and **bursaries** are available to gifted
and talented children

Scholarships

Scholars will take the lead in many of the intellectual and extra-curricular activities of the whole School – and by doing so they learn how to use and mix their special gifts with those of others. It is vital that the scholarship process should encourage and reward attitudes to learning that will above all set standards for others.

We believe that scholarships should not reward talent alone but should also take into account an individual's independent potential and ability to maintain an eager, open-minded attitude to learning. It is important that Scholars should consistently achieve high standards during each year. For all scholarship applications a full report from the candidate's school will be requested.

Candidates may apply for more than one scholarship.

It should also be noted that all scholarships are tenable throughout the holder's career at Stowe, subject to the Headmaster's satisfaction with the holder's industry, performance and behaviour.

Our scholarship entry is competitive, and a typical scholarship award falls in the range of 5% to 20% of the School fees. However, candidates who demonstrate outstanding potential in the relevant assessments can be awarded up to 25%.

Bursaries

Scholarships may be supplemented by means-tested bursaries, with a limited number of fully funded places where there is proven financial need.

Bursaries are normally only available to successful scholarship candidates and are awarded to further supplement fees according to financial circumstances following an in-depth financial assessment.

Buckingham Day Bursaries

Stowe is committed to supporting children in the local community. A limited number of bursaries are available to gifted and talented children who would like to come to Stowe as Day pupils and are successful in meeting our entry criteria (but are not applying for a scholarship award). The value of any bursary given depends on a detailed financial assessment and the funds available. Please indicate on your Enrolment Form if you want to be considered for a Buckingham Day Bursary.

Academic excellence at Stowe

Stowe Scholars follow demanding programmes in pursuit of the excellent examination results they will need to achieve their career ambitions. They are encouraged to go beyond the confines of the syllabus by individual Departments as well as attend the Scholars' clubs and societies that stretch and challenge pupils beyond the limits of the examined curriculum and without the bounds of normal subject disciplines.

Academic Scholarships are available to pupils joining the School in the Lower Sixth Form after GCSE. Competitive Entry Examinations are held in the November of the candidate's GCSE year. Those wishing to be considered for an Academic Scholarship sit two subject papers, which should

be related to their A Level choices, and attend an academic and pastoral interview. Successful scholarship candidates would normally be expected to gain mostly A*s, or the points equivalent, in all their subjects at GCSE.





For the love of Art

Art Scholarships are available for pupils entering the Lower Sixth Form at Stowe. They are offered to candidates who submit evidence of outstanding ability and a strong interest in Art.

We look for evidence of

- drawing from direct observation through a series of sustained studies
- a love of art and an awareness of a range of artists including some contemporary art
- sustained independent work within a theme
- flexible, open-minded and creative approaches to learning

Candidates will be required to provide a portfolio of recent work for assessment. This should contain a broad selection of work in whichever field of Art has been studied. Two-dimensional work need not be mounted. Photographs or digital images of three-dimensional work are preferred.

Particular attention will be paid to good objective drawing. Candidates will attend an art and pastoral interview and are also required to pass Stowe's Entry Examinations, held in the November of their GCSE year, in two subject papers (related to their A Level choices).

Music at the heart of Stowe

A number of Music awards are on offer each year ranging from Exhibitions which provide free instrumental tuition on one or two instruments to Music Scholarships plus free instrumental tuition on two instruments. The value of an award very much depends on the standard of the candidate but can also vary according to the instrument that is offered. In all cases the musical potential and enthusiasm of the candidate will be taken into consideration.

As an approximate guide a Music Scholar should be the equivalent standard of Grade 7 or above on one instrument and be of a good standard on a second instrument or voice. We place great emphasis on a candidate's ability to be an active member of the Department, and also on evidence of enthusiasm for and dedication to music. Clearly instruments which are rare (e.g. bassoon, double bass, viola) may attract a scholarship at a slightly lower level of attainment.


On the Entry Day, held in the November of their GCSE year, candidates perform two contrasting pieces on the first study instrument (or voice) and one piece on the second study instrument (or voice). If both first and second studies are performed on instruments and the pupil is also a singer, a short song performance will also be required. The audition will also include a short sight-reading/aural test appropriate to the level of the applicant.

Candidates attend a pastoral interview and must also pass Stowe's Entry Examinations, which comprise two subject papers (related to the candidate's A Level choices).

Parents should obtain references from the candidate's Headteacher, Director of Music and possibly their instrumental teachers.

Prior to the Entry Day all full-time members of the Music Department offer free consultation lessons with candidates. We are keen that they should know who may be teaching them for the two years they will be spending at Stowe. It is important that each candidate feels they could develop a good and productive relationship with the teacher concerned.

Please contact Sarah Searle (Music Administrator) via email at ssearle@stowe.co.uk who will be happy to arrange a music consultation lesson.



We place great emphasis on a candidate's **ability** to be an active member of the Department, and also on evidence of **enthusiasm** for and dedication to music



Outstanding sporting achievements

Sports Scholarships may be awarded for exceptional candidates showing outstanding potential in at least one of the following sports: rugby, hockey or cricket for boys and hockey, lacrosse or tennis for girls. Whilst not a key girls' sport, expertise in netball in addition to one of the key sports will be considered seriously. Each application is reviewed individually on its merits and due consideration given to the contribution they would make to sport at Stowe.

Candidates must be playing at County or Divisional level in their chosen sport. Assessment will take the form of a full day at Stowe, taking part in a fitness test and a sports assessment followed by Entry Examinations. Candidates will also attend a pastoral interview. The Entry Examinations are held in the November of the candidate's GCSE year and they will sit two subject papers (related to their A Level choices).

Candidates must also submit a Sports CV, showing clear evidence of their sporting achievements, and two references from people who have coached them.

Roxburgh

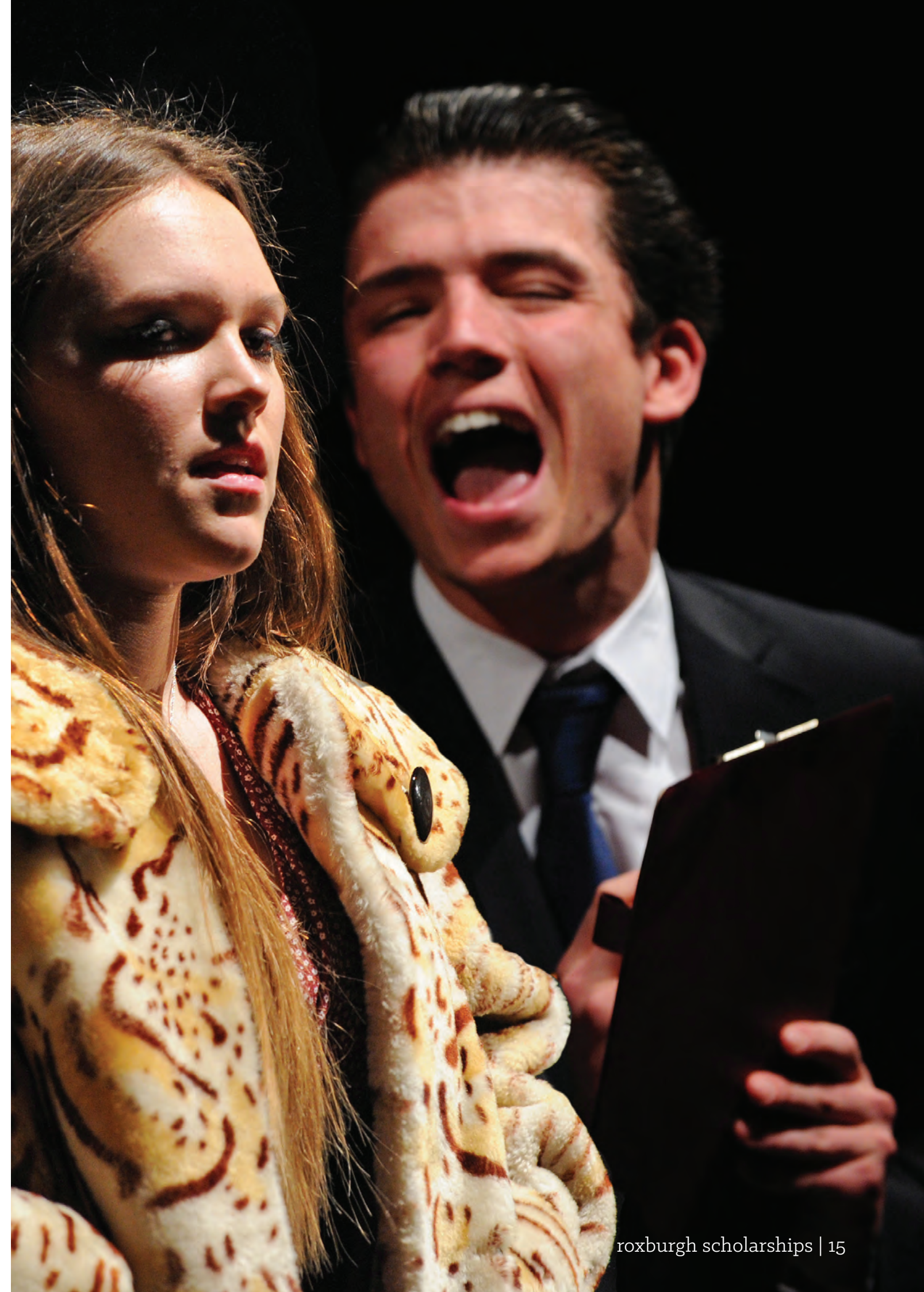
All-rounder talent at Stowe

The Roxburgh Scholarships are named in memory of Stowe's founding Headmaster, J. F. Roxburgh. These Scholarships are intended to enable any boy or girl of outstanding all-round ability and leadership potential to benefit from Stowe's unrivalled environment to develop fully his or her talents.

In addition to strong academic potential, which will be demonstrated in the Entry Examinations, it is expected that candidates will display excellence in at least one of the following: Sport, Music, Art or Drama. This will be assessed by an audition for Music and Drama, presentation of a portfolio for Art or a fitness test and assessment for Sport, on the Entry Day at Stowe. Candidates will also attend an academic and pastoral interview.

The Entry Day will be held in the November of the candidate's GCSE year. Entry Examinations will comprise two subject papers, which will be related to A Level choices. Successful scholarship candidates would normally be expected to gain mostly As with a minimum of four A*s, or the points equivalent, at GCSE.

Candidates are also required to submit a portfolio which should include details of the candidate's interests and achievements. Testimonials or references should be shown, and the inclusion of relevant photographs is also welcome.



2017 Entry

Closing date for Sixth Form applications

14 October 2016

Sixth Form Entry Day

12 November 2016

Scholarship Examination Dates

Academic

Entry Examinations and Interview

12 November 2016

Art

Entry Examinations, Portfolio and Interview

12 November 2016

Music

Entry Examinations, Interview and Audition

11 November 2016

Sport

Entry Examinations, Interview and Assessment Day

11 November 2016

Roxburgh

Entry Examinations and Interview (with Sport Assessment)


11 November 2016

Entry Examinations and Interview (with Music, Art or Drama Assessment)

12 November 2016

Please note:

Interviews at Stowe and references from a candidate's current school will be taken into account. The Registrar would be pleased to discuss any aspect of the Scholarship application process with parents or pupils. Please feel welcome to email the Admissions Office at admissions@stowe.co.uk or call us on +44(0)1280 818323.



“Mixes the erudite with the sporty and studious, with space reserved for the eclectic and maverick. Ideal for those keen to learn within and beyond the bounds of the classroom”

Good Schools Guide

Stowe School
Stowe
Buckingham
MK18 5EH

t | +44 (0)1280 818000
e | admissions@stowe.co.uk
w | www.stowe.co.uk